

MANISCOPIC

MHT 10160 L Turbo

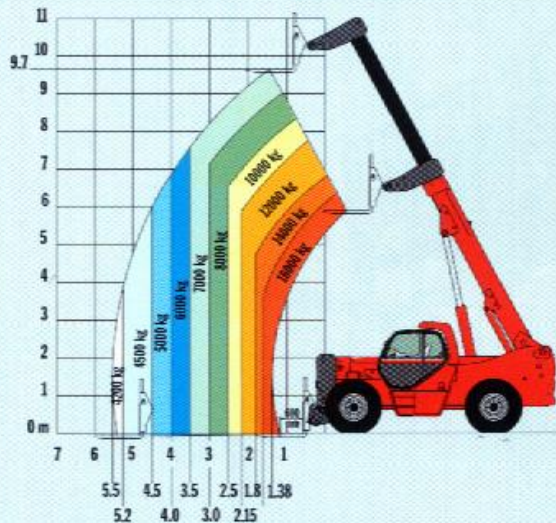
- Capacity : 16000 kg
- Lift height : 9.70 m
- Maximum forward reach : 5.50 m
- Engine : 175 HP
- 4 wheel steer – 4 wheel drive
- Hydrostatic transmission
- Frame levelling 10°/10°



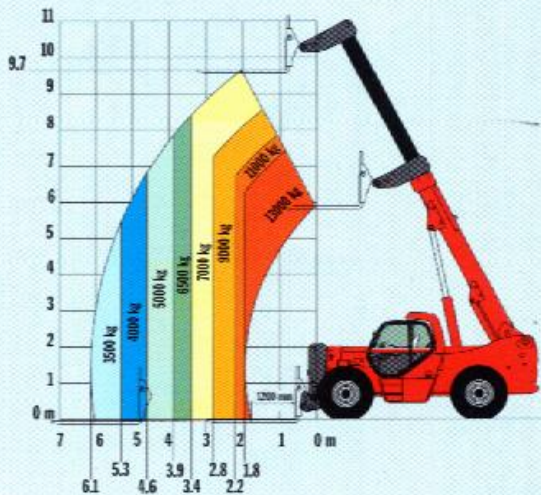
 **MANITOU**

MHT 10160 L TURBO

LOAD CENTRE AT 600 MM



LOAD CENTRE AT 1200 MM



ENGINE

Diesel MERCEDES OM 904 LA Turbo – Intercooler – Air / Air

Capacity : 4 cylinders / 4250 cm³
 Power (ISO/TR 14396) : 175 HP / 129 kw
 Rated speed : 2200 r.p.m.
 Maximum torque at 1200 r.p.m. : 675 Nm

Electronic injection (4 injection pumps and 4 injectors)

Fan : puller
 Cooling : water

Anti-polluting standards : EUR2
 Air filter (type / micron) : cartridge / 3
 Battery : 12 Volts
 Capacity : 120 Ah

LIFT CAPACITY / HEIGHT

Load centre	at 600 mm	at 1200 mm
Lift capacity :	16000 kg	13000 kg
Capacity at max. height :	7000 kg	7000 kg
Capacity at max. front reach :	4200 kg	3500 kg
Lift height :	9.70 m	9.70 m

Maximum front reach : 5.50 m 6.10 m

TRANSMISSION

Hydrostatic transmission **REXROTH**

Hydrostatic variable flow pump : 125 cm³
 Hydrostatic variable cylinder engine : 160 cm³
 Reversing shift : electro-magnetic
 Differential central : YES

2 forward and reverse speeds :
 Low speed : 10 km/h
 Fast speed : 25 km/h

HYDRAULICS

Main pump : Piston Load Sensing REXROTH Haute pression

Capacity : 75 cm³
 Maximum pressure : 350 bar
 Flow : 170 L/mn
 Max. flow on attachment (at 280 bar) : 120 L/mn

Steering pump :

Type : Load sensing
 Maximum pressure : 210 bar

Power brake circuit pump :

Type : **REXROTH**
 Capacity : 25.7 cm³
 Maximum pressure : 40 bar
 Flow : 59 L/mn

Hydraulic oil radiator :

2 continuous fans
 2 automatic fans

Distributor : Big flow hydraulic proportional REXROTH (280 to 300 L/mn) with 4 closed centre elements

Drive Type :

Electro-Proportional hydraulic joystick with 3 movement combination

- 1- Lifting / Crowding
- 2- Boom extension / Attachment
- 3- Lifting / Boom extension

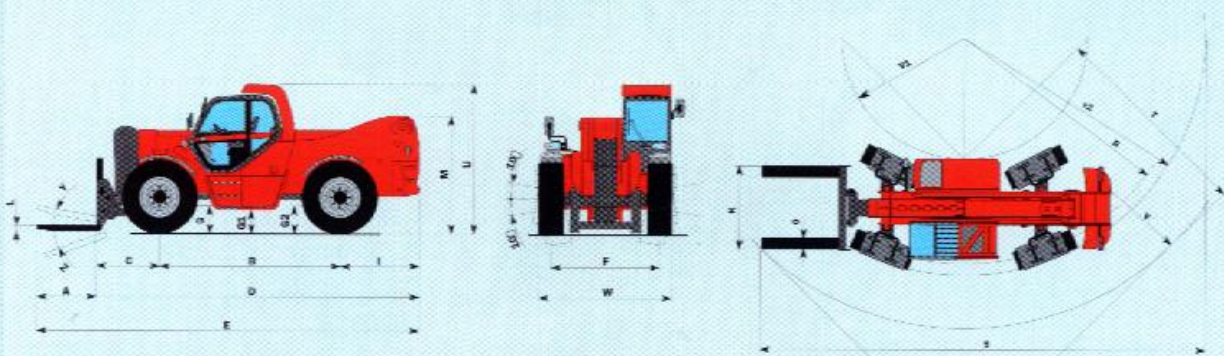
Flexibles :

TP tube type with high pressure type flexible links

Filtration degree (micron) :

Suction : 250 mic
 Return : 10 mic
 Filtration air tank : 10 mic

DIAGRAMS



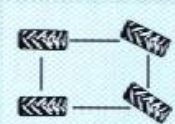
A	B	C	D	E	F	G	G1	G2	I	K	L	M	O	R	S	T	U	V	V1	V2	W	Y	Z
1500	3650	1335	6605	8105	2000	685	445	685	1620	1750	80	2300	200	5445	10345	4255	2935	6810	2870	5685	2500	12°	105°

AXLES

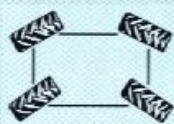
OMCI (stacker) Heavy Duty type, oil bath with epicycloidal reduction with 3 satellites Integrated steering cylinders with double action in high position

Frame levelling 10°/10° on front axle

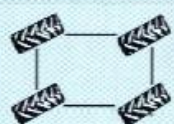
3 steering modes:



2 WHEEL STEERING



4 WHEEL STEERING



CRABSTEER

BRAKES

Type :

Drive type :

On axle :

Parking brake on front and rear axles :

Oil bath multidisc negative parking brake

oil bath multidisc hydraulic front + rear

TYRES

Model :

Pressure :

Drawbar pull :

16.00 R 25

9 bar

15500 daN

LIFTING/TELESCOPING MOTIONS

Unladen lifting :

Unladen lowering :

25 sec

17 sec

Unladen extending internal telescope :

Unladen retracting internal telescope :

14 sec

11 sec

FORKS

Standard equipment TFF MT 1750

Dimensions :

Weight of forks :

200 x 80 x 1500 mm

560 kg

CAPACITIES

Cooling circuit :

Engine oil :

Equipment hydraulic oil :

Fuel tank :

16 L

15.8 L

290 L

200 L

WEIGHT

Total weight without equipment :

Total weight unladen with forks :

Total weight laden with forks :

22300 kg

23615 kg

39615 kg

Load on axle with standard equipment (unladen)

On front axle, boom retracted :

On rear axle, boom retracted :

9430 kg

14185 kg

Load on axle with standard equipment (laden)

On front axle, boom retracted :

On rear axle, boom retracted :

34200 kg

5415 kg

STANDARD EQUIPMENTS

- ROPS-FOPS cabin
- GRAMMER seat
- Front and rear wipers
- Driving lights
- Rotating beacon
- Left rearview mirror
- Safety device with automatic lock of aggravating movements
- Safety valves on cylinders
- Heating
- TFF

OPTIONS

- Air conditioning
- Comfort seat
- Roof wipers
- Cabin rearview mirror

Equipment customised on order



Manitou MHT 10160 L – 35K



Hydraulic Forkpositioner with side shift
Forks together - backrest



Operators, parts and service manual in english



Frame Levelling



First aid kit and Fire extinguisher



Frame Levelling



Air condition



Daily check



Cyclonic air filter



CD-player



Extra worklight - front and back



Safety belt



Warning Triangle



16 Ton fork hook
(slide over fork
attachment)

Manitou telescopic handler – MHT 10160L

	Metric	U.S.
Capacity	16.000	35.273
Lifting height	9,70	31,8
Closed height	2,94	9,6
Fork length	2,00	6,6

Wheels front	Single mounted, pneu
Wheels rear	Single mounted, pneu.
Transmission	Hydrostat
Steering	Servo

Equipment:

Manitou closed cabin with:

Wind screen wiper, heater, safety glass, CD/radio

Light equipment consisting of:

Position light and front driving light, red rear light, stop light and blinkers, Rotating beacon

Aircondition

Operators, Service, Maintenance and Parts manuals in English
Filters for 1. and 2. service, Indian prefilter (cyclonic) for desert operation, floormat rubber, forkpos./sideshift

Safety:

Safety belts, Fire extinguisher, First aid kit, back up siren
Protection guard, Warning triangle

**Manitou rough-terrain telescopic handler (35K
MHT10160L**

	Metric	U.S.
Capacity	16.000	35.273
Lifting height	9,70	31,8
Forward reach	5,50	18,0
Fork length	2,00	6,6
Width of carriage	2,60	8,5
Closed height	2,93	9,6

Telescopic type	Single boom
Wheels front	Single mounted, 16R x 25 pneu
Wheels rear	Single mounted, 16R x 25 pneu
Engine	Mercedes 170 hp
Transmission	Hydrostat
Hydraulic	Rexroth joystick
Seat	Resilient health seat

Equipment Manitou steel cabin equipped with

Windscreen wipers
Heater
Safety glass
Radio

Aircon

Light equipment consisting of:

Complete roadlight

3 extra worklight - 2 front and 1 rear mounted on cab

Cyclon preefilter for desert operator

Safety

Safety belts
Fire extinguisher
First aid kit
Flashing yellow safety light
back up horn

**ELM powered adjustable forks type 4IGGS16026
(sideshift/forkpositioner)**

warranty 12 months 100% on parts or 2000 hours

Operators, service and Parts manuals in English