

# Ultra Series

MODELS 1200/1350 TELESCOPIC  
BOOM LIFTS



*The Power To Go Where  
Others Can't*



*The Power To Be Both  
Large and Compact*



*The Power To Manoeuvre  
With Precision Accuracy*

**1200SJP  
1350SJP**

[www.jlgeurope.com](http://www.jlgeurope.com)



**JLG**

# Stronger. Taller. More Powerful.

JLG's revolutionary new Ultra Series Telescopic Boom Lifts are engineered with the strength, power and extended reach to take operators to greater heights—with features that put these boom lifts in a class of their own.

With a comprehensive reach of 41.15 m (135 ft.) and a capacity of 450 kg (1,000 lbs.) in the majority of the work envelope, the JLG Model 1350SJP Telescopic Boom Lift goes higher than any other telescopic boom lift in history.

The Ultra Series power arms are built from 100,000 psi steel, making them 40% stronger than the competition and the most robust in the industry. This boom strength allows JLG to offer revolutionary productivity packages that increase operator productivity, comfort and ease of operation.

## Unmatched Range of Motion and Reach

With their exclusive controlled arc, Ultra Series Boom Lifts automatically maintain a smooth arc at the edges of the work envelope by controlling the boom extension through the lift function. The JibPLUS® boom feature allows the operator to use the platform to literally reach around corners.\* And, with the Capacity Control system, operators can automatically limit the work envelope to a pre-selected zone.

\*Capacity is restricted to 230 kg. (500 lbs) when jib is in side-swing mode.

## More Work with Less Effort

The Model 1200SJP reaches up to 50% more area than other 36.58 m (120 ft.) boom lifts, especially in the critical area beyond 15.24 m (50 ft.) of reach. It even outreaches the 38.10 m (125 ft.) class of boom lifts!

The Model 1350SJP creates a new class of telescopic boom lifts. With its unmatched work envelope and high capacities, the Model 1350SJP combines strength with revolutionary productivity-enhancing accessories without compromising reach at critical ranges!

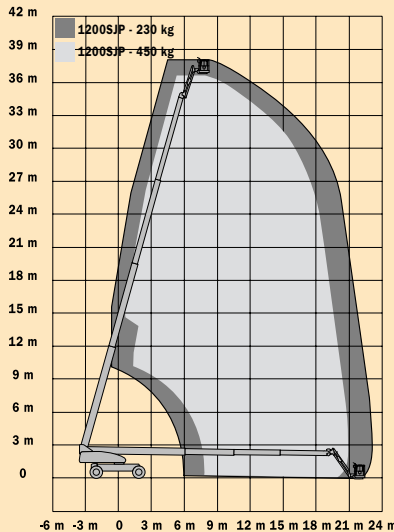
## Improved Performance and Operator Comfort

Designed with operator comfort in mind, every JLG Ultra Series Telescopic Boom Lift features a control system that adjusts the swing speed to the boom extension

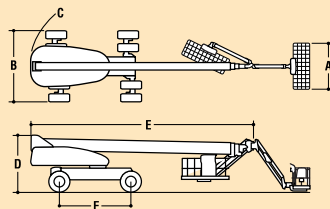
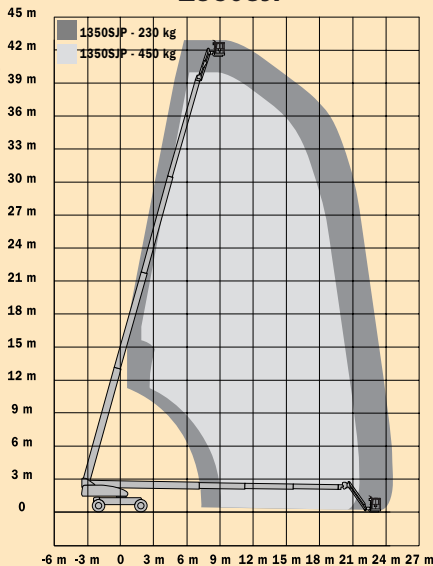
to maintain constant platform velocity. Steering speed is proportional to wheel angle to help reduce the jerky motion effect common on competitive boom lifts. Operators experience improved manoeuvrability when selecting from 3 steering modes: 2-wheel steer, 4-wheel co-ordinated, or the industry-best 1:1 ratio crab steering. Ease of operation is provided as the control system automatically synchronises the wheels when switching between steer modes.



**1200SJ**



**1350SJ**



**Reach Specifications**

<b>Platform Height</b>	36.58 m (120 ft.)	41.15 m (135 ft.)
<b>Horizontal Reach</b>	22.86 m. (75 ft.)	24.38 m (80 ft.)
<b>Swing</b>	360° Continuous	360° Continuous
<b>Platform Capacity—Restricted</b>	450 kg (1,000 lbs.)	450 kg (1,000 lbs.)
<b>Platform Capacity—Unrestricted</b>	230 kg (500 lbs.)	230 kg (500 lbs.)
<b>Platform Rotator</b>	180°	180°
<b>JibPLUS®</b>	Length	2.44 m (8 ft.)
	Horizontal Motion <sup>1</sup>	180°
	Vertical Motion	130° (+75°/-55°)

**Dimensional Data**

<b>A. Platform Size</b>	0.91 x 2.44 m (36 x 96 in.)	0.91 x 2.44 m (36 x 96 in.)
<b>B. Overall Width</b>	Axles Retracted	2.49 m (8 ft. 2 in.)
	Axles Extended	3.80 m (12 ft. 6 in.)
<b>C. Tailswing</b>	1.67 m (5 ft. 6 in.)	1.67 m (5 ft. 6 in.)
<b>D. Stowed Height</b>	3.05 m (10 ft.)	3.05 m (10 ft.)
<b>E. Stowed Length</b>	10.64 m (34 ft. 11 in.)	11.86 m (38 ft. 11 in.)
<b>F. Wheelbase</b>	3.81 m (12 ft. 6 in.)	3.81 m (12 ft. 6 in.)
<b>Ground Clearance</b>	0.30 m (12 in.)	0.30 m (12 in.)
<b>Gross Vehicle Weight <sup>2</sup></b>	18,650 kg (41,100 lbs.)	20,300 kg (44,750 lbs.)

**Chassis**

<b>Max Ground Bearing Pressure</b>	7.03 kg/cm <sup>2</sup> (100 psi)	7.38 kg/cm <sup>2</sup> (105 psi)
<b>Drive Speed</b>	5.2 km/h (3.25 mph)	5.2 km/h (3.25 mph)
<b>Gradeability</b>	45%	45%
<b>Turning Radius (Inside)</b>		
	Axles Retracted	4.39 m (14 ft. 5 in.)
	Axles Extended	2.44 m (8 ft.)
<b>Turning Radius (Outside)</b>		
	Axles Retracted	6.86 m (22 ft. 6 in.)
	Axles Extended	5.89 m (19 ft. 4 in.)
<b>Crab Steer Ratio <sup>3</sup></b>	1:1	1:1
<b>Axle Oscillation</b>	0.30 m (12 in.)	0.30 m (12 in.)
<b>Tyres/Type</b>	445/50D710 Foam Filled	445/50D710 Foam Filled

**Power Source**

<b>Diesel Engine</b>	Deutz BF4M 2011	65 kW (87 hp)	65 kW (87 hp)
<b>Fuel Tank Capacity</b>		117 L (31 gal.)	117 L (31 gal.)
<b>Hydraulic Reservoir</b>		208 L (55 gal.)	208 L (55 gal.)
<b>Auxiliary Power</b>		12V DC	12V DC

1. Capacity is limited to 230 kg. (500 lbs) when JibPLUS® is extended horizontally.
2. Certain options or country standards increase weight.
3. Ratio of forward travel to lateral travel.

**Standard Features**

- Platform: 0.91 m x 2.44 m (36 in. x 96 in.)
- Selectable Capacity Envelope
- Drive-out Extending Axles
- Oscillating Axle
- Inward Swinging Gate
- 180° Hydraulic Platform Rotator
- AC Power in Platform
- 5 Degree Tilt Alarm/Indicator Light
- Swing-Out Engine Tray
- 12V DC Auxiliary Power
- Hourmeter
- Control ADE™ System
- Full-time 4WD

- Spark Arresting Muffler
- 3 Selectable Steering Modes
- Proportional Controls
- Gull-Wing Hoods
- Operators Tool Tray
- 445/50D710 Foam Filled Rim
- Protector Lug Tread Tyres
- Platform Console Machine Status Light Panel\*
- Lifting/Tie Down Lugs
- Engine Distress Warning/Shutdown—Selectable via JLG Analyzer

\*Provides indicator lights at platform control console for system distress, fuel level, low fuel, 5 degree tilt light and foot switch status.

**Individual Options**

- Platform: 0.91 m x 1.83 m (36 in. x 72 in.)
- Light Package<sup>1</sup>
- Alarm Package<sup>2</sup>
- 12 mm (½ in.) Airline to Platform
- Soft-Touch System 1.83 m/2.44 m Platform (6 ft./8 ft.)
- 2500W Generator
- Catalytic Muffler
- Hostile Environment Kit<sup>3</sup>
- Platform Worklights
- All-Motion Alarm

1. Includes platform mounted work lights and drive/backup lights.
2. Includes all-motion alarm and flashing amber beacon.
3. Includes console cover, boom wipers and cylinder bellows.

# Put the Power of the JLG Ultra Series Telescopic Boom Lifts to Work

When you're reaching for the sky, reach for JLG's Ultra Series Telescopic Boom Lifts, and the powerful performance geared towards operator convenience.

With JLG's exclusive power-arm designs, the Ultra Series can carry operators to 41 metre (135 ft.) jobs with higher capacities, more reach and a JibPLUS® feature for enhanced versatility. Plus, industry-leading motion and arc ranges help operators get the job done on time and on budget.

## High Capacity

With a dual 450/230 kg (1,000/500 lbs.) capacity the Ultra Series can handle heavier loads and provide better reach to critical work areas. An Automatic Capacity Control System adjusts the work envelope to match the selected capacity.



## Rough Terrain

Ultra Series Boom Lifts are the ultimate big boom productivity tools with full-time, 4-wheel drive that utilises two drive pumps—each driving one side of the machine. Two front-to-rear rotary flow dividers provide a level of traction unmatched in this class of boom. Plus, JLG is the only manufacturer to offer an oscillating axle on 36 metre (120 ft.) boom lifts and above.



## JLG Workstation in the Sky™ Series Accessories

The muscle of 100,000 psi steel in the power arm means optimum on-the-job versatility. JLG builds the accessories operators need — welders, cutters, glaziers and more—right into the work platform, saving time, money and manpower.



## Automatic Platform Leveling

While operating an Ultra Series boom lift, the work platform is automatically levelled in relation to gravitational forces, not the machine chassis, as found on competitive equipment. Platform levelling in relation to gravity provides unmatched operator comfort, especially at 41 metres (135 ft.)



## The JLG "1 & 5" Warranty

JLG Industries, Inc. backs our products with our exclusive "1 & 5" Warranty. We provide coverage on all products for one (1) full year, and cover all specified major structural components for five (5) years. Due to continuous product improvements, we reserve the right to make specification and/or equipment changes without prior notification. This machine meets or exceeds applicable ANSI A92.6-1999, CAN3-B354.2-M82 and OSHA regulations in 29 CFR 1910.67 and 29 CFR 1926.453 as originally manufactured for intended applications.



[www.jlgeurope.com](http://www.jlgeurope.com)

**JLG Industries (Europe)**  
A Division of JLG Industries, Inc.  
Kilmartin Place, Tannochside Park,  
Uddingston, G71 5PH, Scotland  
Tel: 01698 811005 Fax: 01698 811055  
e-mail address: europe@jlg.com



Printed in UK  
FORM NO.: TB013-0802-5000  
PART NO.: TB013-ENGLISH

**PUT YOURSELF IN A POWERFUL POSITION**